

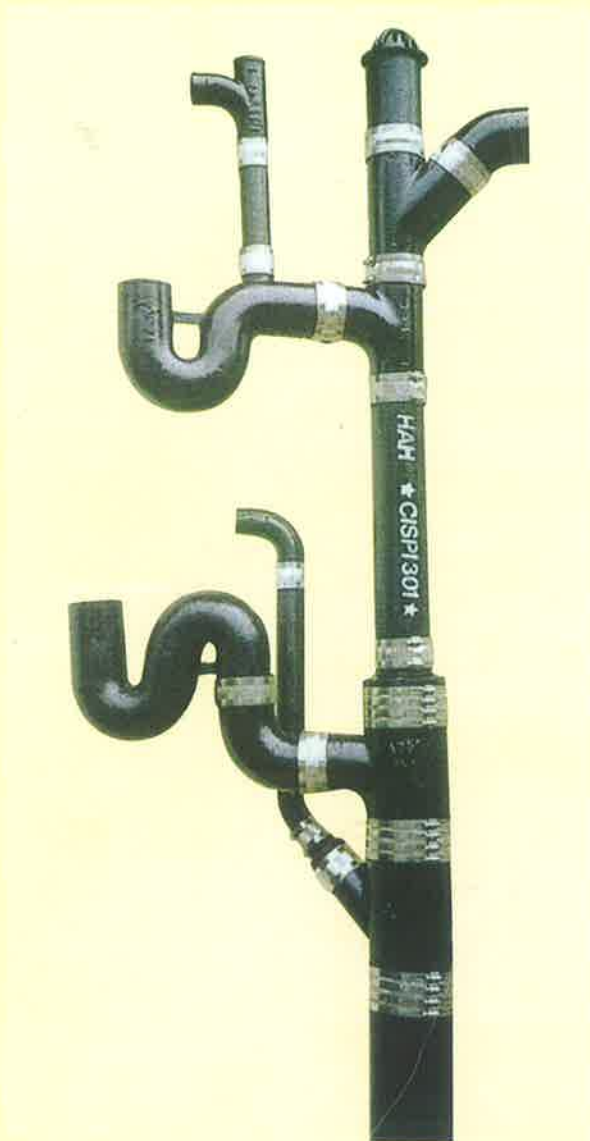
'HAH' Brand Hubless Cast Iron Soil Pipes & Fittings Plus Stainless Steel Couplings

CISPI 301:1995

ASTM C564:1995

CISPI 310:1995

BS 6087-1990



'HAH' Hubless Cast Iron Pipes & Fittings Plus Stainless Steel Couplings

'HAH' Brand Hubless Cast Iron Soil Pipes & Fittings Plus Stainless Steel Couplings

- Application:** Used primarily in building construction for sanitary and storm drain, soil waste and vent piping applications. The product is installed in residential construction, hospitals, schools, commercial and industrial structures.
- Materials:** Made of premier quality Cast Iron that ensures reliability and functionality. The couplings are constructed of rugged elastometric rubber with stainless steel shield for lateral stability and resistance to shear.
- Advantages:** Possesses superior noise suppression, corrosion resistance, high rigidity, low thermal expansion, fire resistant, cost convenience and durability. Ease of installation and maintenance due to its unique characteristics.
- Protection:** Coated with anti-rust tar bitumous paint finishing that ensures durability. Internal epoxy tar coating is also available upon request.
- Specification:** a) Pipes & Fittings: Complied to Cast Iron Soil Pipe Institute Standard (CISPI) 301:1995, 310:1995 and BS 6087-1990
b) Coupling: Meets the American Society for Testing and Material (ASTM) C564:1995

Pipes, Fittings and Couplings are tested by our local Testing Authorities.

Recommended Procedures For The Installation Of "HAH" Hubless Cast Iron Soil Pipes and Fittings

1. Clean the external surfaces of the ends of the pipe and/or fitting to be joined so that they are reasonably free from dirt, mud, gravel, or other foreign material.
2. Lubricate as follows: Apply a thin coat of lubricant on the inside of the sleeve and external surface of the pipe and/or fitting to be joined.
3. Place the rubber sleeve on one end of the pipe or fitting and the stainless steel shield assembly on the other pipe and/or fitting .
4. Firmly seat the pipe or fitting ends against the integrally moulded shoulder inside the rubber sleeve. Slide the stainless steel shield assembly into position over the sleeve and tighten the bands, using a properly calibrated torque wrench.

Important: Different designs of hubless couplings shall be installed in accordance with the respective manufacturer's installation instructions.



'HAH' Hubless Cast Iron Pipes & Fittings Plus Stainless Steel Couplings



45 DEG BEND

Stock Code	DN	Dimensions		
		D	B	R
HB-05045	50	50	70	76
HB-07545	75	75	77	90
HB-10045	100	100	80	102
HB-15045	150	150	105	127
HB-20045	200	200	128	152



HUBLESS PIPE

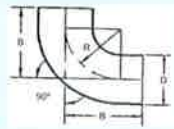
Stock Code	DN	Dimensions		
		ID	OD	L
HP-050300	50	50	60	3000
HP-075300	75	75	85	3000
HP-100300	100	100	110	3000
HP-150300	150	150	160	3000
HP-200300	200	200	210	3000

STAINLESS STEEL COUPLING

Stock Code	DN
HRC-050	50
HRC-075	75
HRC-100	100
HRC-150	150
HRC-200	200

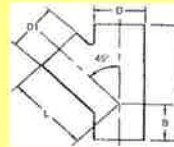


'HAH' Hubless Cast Iron Pipes & Fittings Plus Stainless Steel Couplings



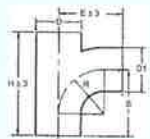
90 DEG BEND

Stock Code	DN	Dimensions		
		D	B	R
HB-05090	50	50	114	76
HB-07590	75	75	128	90
HB-10090	100	100	140	100
HB-15090	150	150	178	128
HB-20090	200	200	216	152



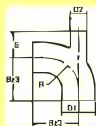
45 DEG TEE

Stock Code	DN	Dimensions				
		D	D1	H	B	L
HYT-100075	100 X 75	100	75	203	43	165
HYT-100100	100 X 100	100	100	240	62	180
HYT-150075	150 X 75	150	75	248	32	222
HYT-150100	150 X 100	150	100	284	49	285
HYT-150150	150 X 150	150	150	357	84	273
HYT-200150	200 X 150	200	150	360	60	300
HYT-200200	200 X 200	200	200	435	95	340



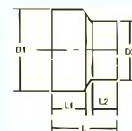
90 DEG TEE

Stock Code	DN	Dimensions					
		D	D1	H	B	R	E
HT-050050	50 X 50	50	50	175	115	75	115
HT-075050	75 X 50	75	50	175	115	75	115
HT-075075	75 X 75	75	75	203	127	90	127
HT-100050	100 X 50	100	50	175	114	75	140
HT-100075	100 X 75	100	75	203	127	90	140
HT-100100	100 X 100	100	100	240	140	100	140
HT-150075	150 X 75	150	75	234	140	90	165
HT-150100	150 X 100	150	100	255	150	100	165
HT-150150	150 X 150	150	150	318	178	127	178
HT-200150	200 X 150	200	150	343	190	127	203
HT-200200	200 X 200	200	200	394	215	150	215



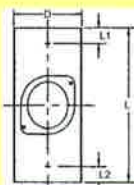
90 DEG BEND WITH VENT

Stock Code	DN	Dimensions			
		D1	D2	B	E
HBV-07505090	75 X 50 X 90 deg	75	50	128	55
HBV-10005090	100 X 50 X 90 deg	100	50	140	85



TAPER

Stock Code	DN	Dimensions				
		D1	D2	L	L1	L2
HTP-075050	75 X 50	75	50	95	40	40
HTP-100050	100 X 50	100	50	95	40	40
HTP-100075	100 X 75	100	75	95	40	40
HTP-150050	150 X 50	150	50	102	50	40
HTP-150075	150 X 75	150	75	102	50	40
HTP-150100	150 X 100	150	100	102	50	40
HTP-200100	200 X 100	200	100	115	50	40
HTP-200150	200 X 150	200	150	127	50	40



INSPECTION PIPE

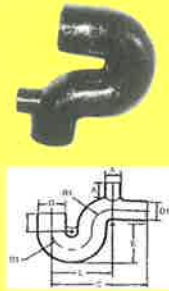
Stock Code	Dimensions			
	D	L	L1	L2
HIP-050400	50	400	30	30
HIP-075400	75	400	30	30
HIP-100400	100	400	30	30
HIP-150400	150	400	40	40

'HAH' Hubless Cast Iron Pipes & Fittings Plus Stainless Steel Couplings



P TRAP W/O VENT

Stock Code	DN	Dimensions					
		D	D1	B	C	E	R1
HPT-100075	100 X 75	100	75	75	360	165	75
HPT-100100	100 X 100	100	100	75	360	165	75
HPT-125075	125 X 75	125	75	75	360	165	75
HPT-150150	150 X 150	150	150	75	360	165	75



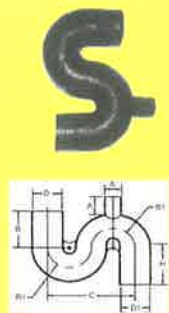
P TRAP WITH VENT

Stock Code	DN	Dimensions					
		D	D1	A	B	C	L
HPTV-100075	100 X 75	100	75	50	75	360	225
HPTV-100100	100 X 100	100	100	50	75	360	225
HPTV-125075	125 X 75	125	75	50	75	360	225
HPTV-150150	150 X 150	150	150	50	75	360	225



S TRAP W/O VENT

Stock Code	DN	Dimensions					
		D	D1	B	C	H	R1
HST-100075	100 X 75	100	75	140	300	155	75
HST-100100	100 X 100	100	100	140	300	155	75
HST-125075	125 X 75	125	75	140	300	155	90
HST-150150	150 X 150	150	150	140	300	155	100



S TRAP WITH VENT

Stock Code	DN	Dimensions						
		D	D1	A	B	C	H	R1
HSTV-100100	100 X 100	100	100	50	140	300	155	75
HSTV-125075	125 X 75	125	75	50	140	300	155	90
HSTV-150150	150 X 150	150	150	50	140	300	155	126



END CAP

Stock Code	DN	Dimensions	
		D	L
HEC-050	50	50	45
HEC-075	75	75	45
HEC-100	100	100	45
HEC-150	150	150	45
HEC-200	200	200	57



Grande Alliance Corporation Pte Ltd

Co. Reg. No.: 199308426N

No. 8 Defu Lane 8 Singapore 539313

Tel: (65) 6286 3265 (6 Lines) Fax: (65) 6281 1373

Email: info@grandealliance.com.sg

Website: www.grandealliance.com.sg

Marketed by: